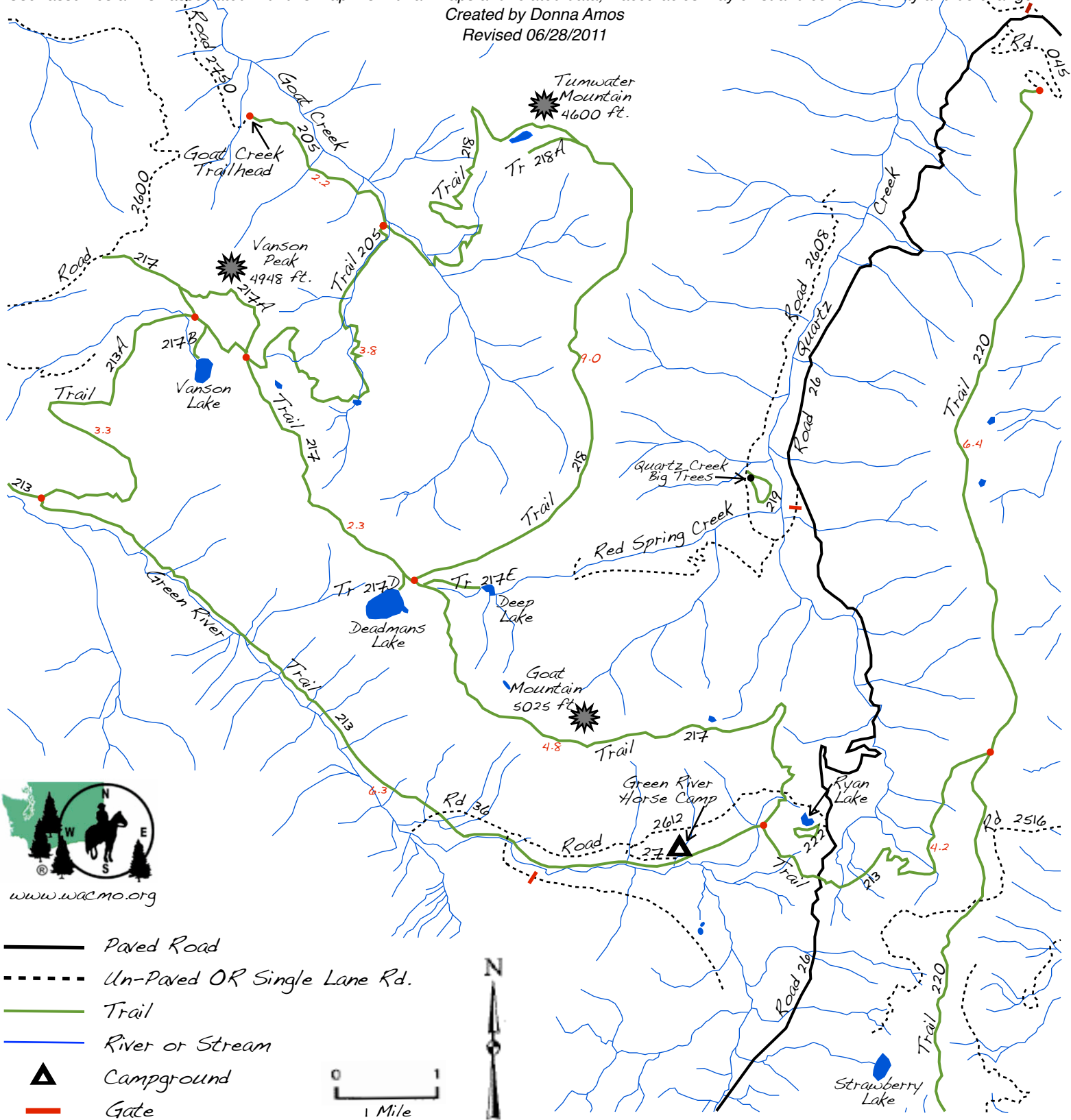


Cathedral Falls/Vanson Peak/Green River Horse Camp

User assumes all risk associated with this map. As with all maps and related data, inaccuracies may exist and conditions may and do change.

Created by Donna Amos

Revised 06/28/2011



Driving Directions to Goat Creek Trailhead: From North or Southbound Interstate 5 take exit 68 (Morton/White Pass) and head EAST on State Hwy. 12 to Mile Marker 103 and turn SOUTH onto Kosmos Rd. Go 1/10 of a mile and turn EAST (Left) onto Champion Haul Road. Follow Champion Haul Road 4 miles and cross the single lane logging bridge at the EAST end of Riffe Lake. At the end of the bridge turn RIGHT onto Road 2742 and go 8/10 of a mile and turn LEFT onto Road 2750. Follow Road 2750 3.7 miles to the Goat Creek Trailhead. **NOTE: Road 2750 is a steep, narrow dirt road with very few turnouts and the trailer turnaround is restricted to smaller trailers. This trailhead access is not suitable for very large horse trailers.**