

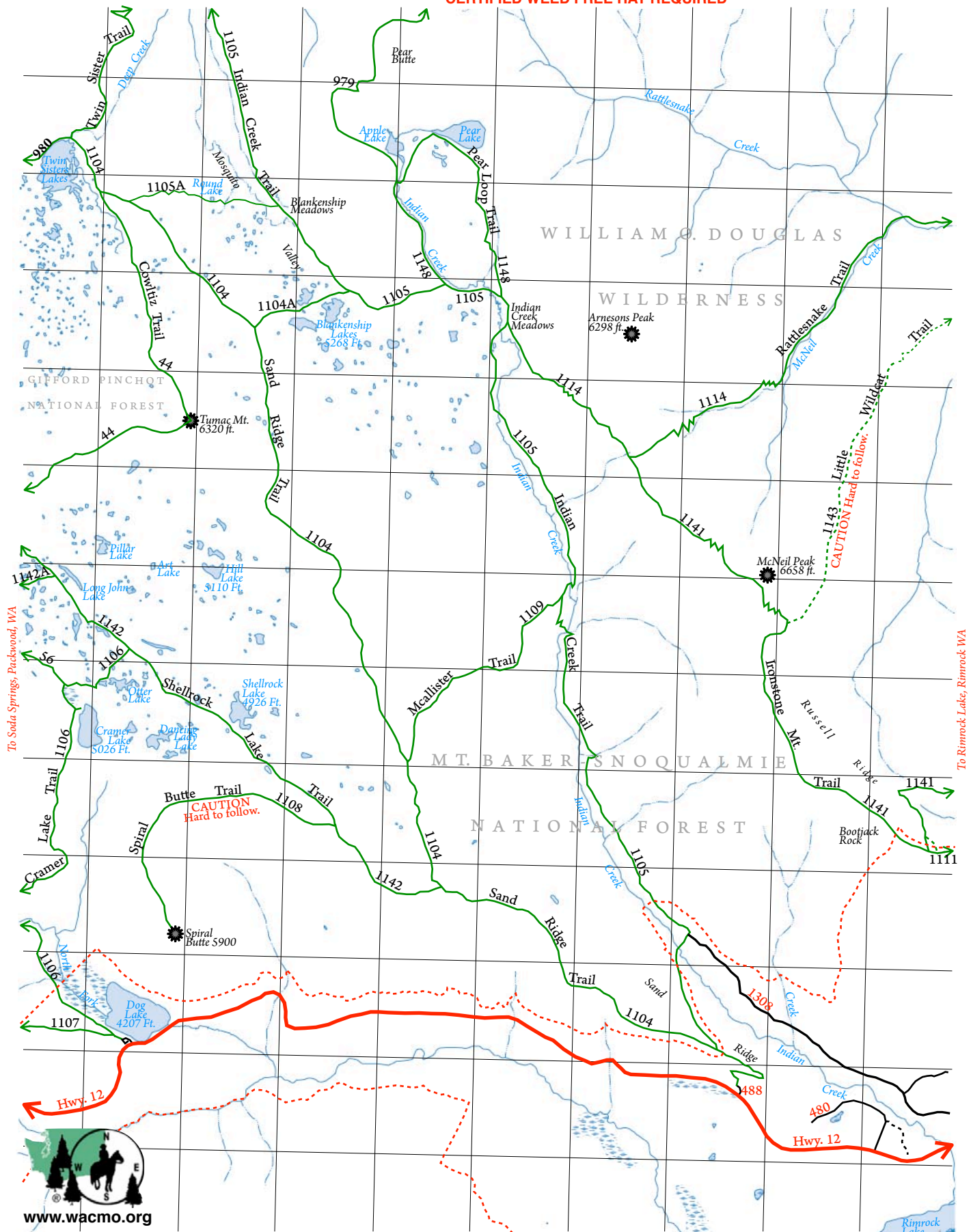
Sand Ridge - White Pass, Wash.

Created by D. Amos

Revised 07/2014

User assumes all risk associated with this map. As with all maps and related data, inaccuracies may exist and conditions may and do change.

**NW FOREST PASS REQUIRED
CERTIFIED WEED FREE HAY REQUIRED**



www.wacmo.org

Driving Directions to Sand Ridge Trailhead: US Route 12 milepost 157.47 (0.5 mile west of Mile Marker 158) Road # 488 is on the north side of the highway (left side if headed east).
GPS Coordinates: 46.651718139648N, 121.27992248535W

Water ———
Wilderness Boundary - - - - -
(Fill out the Free Permit)
Point of Interest ●
1 Mile

Paved Road ———
Gravel OR Dirt Rd ———
Overgrown/Abandoned Rd. - - - - -
Trail ———
Abandoned Trail - - - - -